

  
**HAMPTON**<sup>®</sup>  
CAST IRON FIREPLACES



# why choose Hampton?

Over 35 years ago, I founded this company with a mission to produce the finest fireplace products available anywhere. The Hampton line is the result of millions of dollars in product development, years of research and listening to what consumers are looking for in a fireplace: timeless styling, exceptional quality and a way to cut home heating costs.

## **Hampton Quality**

The rich, porcelain, enamel finish of each Hampton cast iron product is a work of art. Select the tasteful glass grille, one of three fashionable colors or side shelves, to create your own Hampton.

## **Cut Fuel Bills in Half**

Turn your furnace down and enjoy comforting Hampton heat in the living areas you spend time in. Have peace of mind, even during power outages. All Hampton products continue to operate without electricity.

## **Lifetime Warranty**

I am so confident in the quality workmanship, the finest materials and durable heavy-duty construction invested in each and every product, that I offer a Limited Lifetime Warranty. I know that you will be as proud of your Hampton as I am – I guarantee it.



Robert Little  
Founder & CEO

# Hampton® Hybrid Catalytic Wood Insert HI400



Hampton HI400 wood insert in timberline brown enamel finish.

## Style meets technology

This hybrid catalytic wood insert by Hampton completes the look of any room. With modern technology and traditional design, you get the best of both worlds – without sacrificing style or efficiency. The HI400 is the next generation of wood inserts, with the ability to heat homes up to 2600 square feet while meeting strict EPA standards.

The hybrid catalytic system allows the fuel to burn at a slower rate, delivering 14 or more hours of heat\* with a single load of wood. Fuel is utilized to its full potential with only 1.8 g/hr. of emissions and 86.1% efficiency!



Hampton HI400 wood insert in black finish.

Specifications	HI400
Maximum BTU*	77,000
Optimum Efficiency	86.1%
Max. log size	22"
Emissions (grams/h)	1.8
Firebox size	2.6 cu. ft.

Min. Fireplace Opening	
Width (front)	28-13/16"
Height	21-3/4"
Depth	19"

\* Length of burn time and BTU range depend on type of wood, moisture content, climate conditions and installation.

#### Standard Features

- EPA certified
- Hybrid catalytic technology
- Single lever bypass damper
- Single rod draft control
- Airwash system
- Brick-lined firebox
- Cast iron door
- Ceramic glass
- Digital catalytic temperature sensor
- Burn time: up to 14 hrs\*
- 6" flue

#### Options

- Black or timberline brown enamel finish
- Two speed blower
- Surrounds in two sizes
- Cast grille
- Backing plates in two sizes
- Stainless steel liner kits
- Flue connectors
- Wrap insulation kits



# Hampton® Wood Inserts

## HI300 & HI200



Hampton HI300 wood insert in timberline brown enamel finish.

### High Efficiency Heat

Hampton cast wood inserts install easily into your existing fireplace adding the timeless beauty of cast iron while eliminating drafts from an open fireplace. These fireplace inserts can deliver up to 75,000 BTU of high efficiency heat, circulating comforting warmth to the living areas you spend time in. Decrease your heating bills and increase the value of your home with one of two inserts sized to fit your fireplace and your lifestyle.



Hampton HI200 wood Insert in metallic black finish.



HI300 with oversize faceplate in black finish.



HI200 in timberline brown enamel finish.



Specifications	HI300	HI200
Maximum BTU*	75,000	55,000
Optimum Efficiency	77.0%	77.7%
Max. log size	18"	18"
Emissions (grams/h)	3.44	3.0
Firebox size	2.3 cu. ft.	1.4 cu. ft.
Min. Fireplace Opening	HI300	HI200
Width (front)	25"	25"
Height	21-1/2"	19-5/8"
Depth	17-1/2"	15-1/16"
Depth (with offset flue)	--	17-11/16"

\* Length of burn time and BTU range depend on type of wood, moisture content, climate conditions and installation.

**Standard Features**

- EPA Certified
- Non-catalytic technology
- Single rod draft control
- Airwash system
- Brick-lined firebox
- Cast iron door
- Cast grille (HI200)
- Ceramic glass
- Burn time: up to 8 hrs\*
- 6" flue

**Options**

- Black or timberline brown enamel finish
- Two speed blower
- Surrounds in two sizes (HI300)
- Cast grille (HI300)
- Power outlet conversion (HI300)
- Standard or offset flue adaptor (HI200)
- Stainless steel liner kit
- Flue connectors
- Wrap insulation kits



# Hampton® Wood Stoves

## H300 & H200



Hampton H200 medium wood stove in charcoal gray finish.

### Comfort and Convenience

Convenient and efficient, these wood stoves will keep your home comfortable all year – even during power outages. Add a two speed blower to circulate even more heat to every part of your room. All Hampton wood products are certified by the Environmental Protection Agency (EPA) and meet or exceed the strictest of clean air standards. Available in two sizes including a hearth mount version, Hampton wood stoves work hard and look great!



Hampton H300 large wood stove shown with optional side shelves in timberline brown enamel finish.



H300 shown in charcoal gray finish.



H200 shown with side shelves in timberline brown enamel finish.



H200 shown with short cast legs in timberline brown enamel finish.

Specifications	H300	H200
Maximum BTU*	45,500	38,800
Optimum Efficiency	83.6%	83.9%
Max. log size	18"	16"
Emissions (grams/h)	4.2	3.9
Firebox size	1.71 cu. ft.	1.34 cu. ft.
Burn time (Typical)*	up to 8 hrs	up to 6 hrs

\* Length of burn time and BTU range depend on type of wood, moisture content, climate conditions and installation.

#### Standard Features

- EPA Certified
- Non-catalytic technology
- Single rod draft control
- Airwash system
- Brick-lined firebox
- Cast iron door
- Cast grille
- Ceramic glass
- Standard legs
- Top or rear vent
- 6" flue
- Ash drawer (H300)
- Front and side door loading (H300)
- Cast iron cooktop surface (H300)

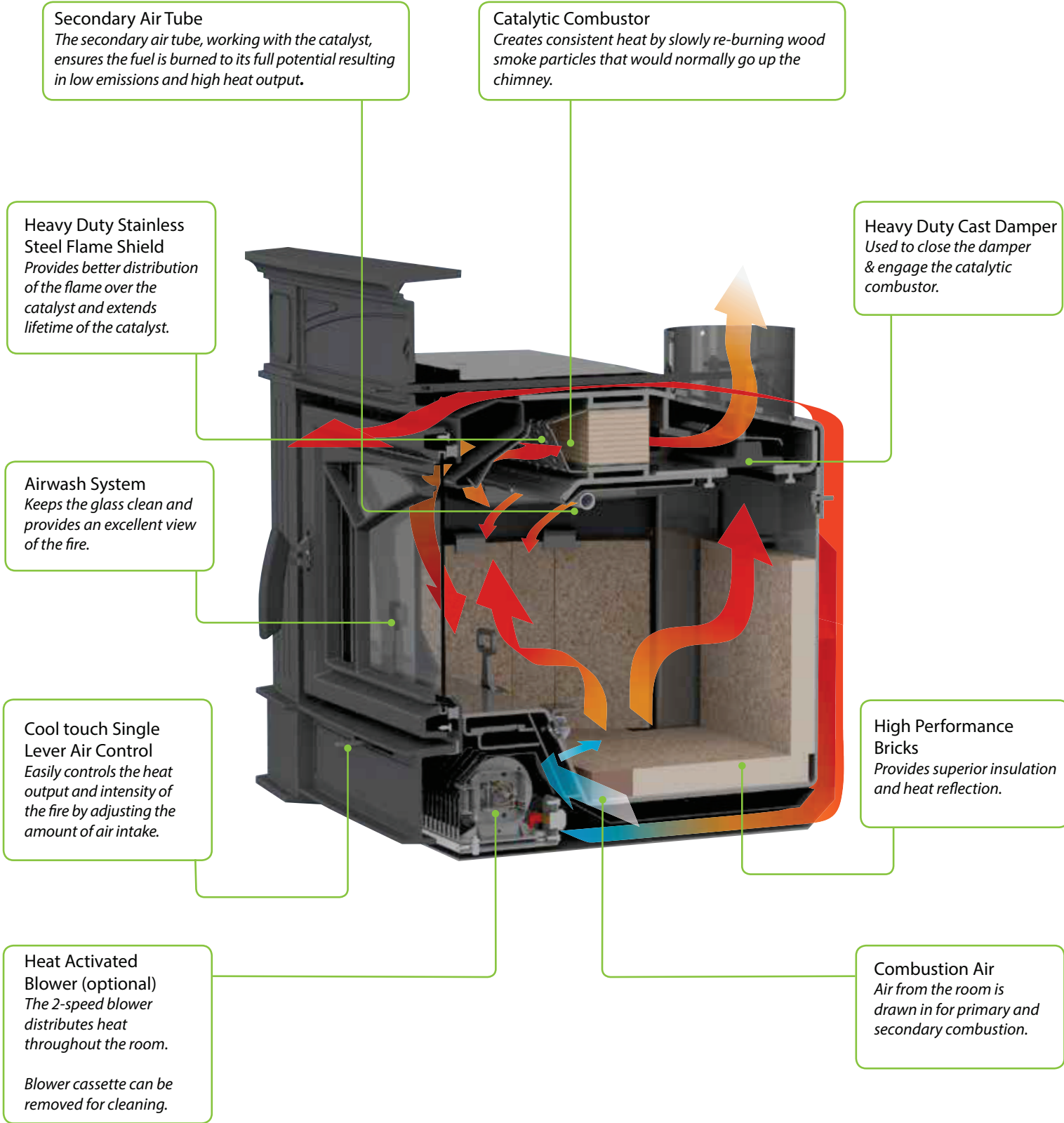
#### Options

- Charcoal gray or timberline brown enamel finish
- Matching side shelves (set of two)
- Short cast legs
- Two speed blower
- Outside air adaptor (use with standard legs only)
- Ash drawer (H200 - use with standard legs only)
- Stainless steel liner kits
- Wrap insulation kits





## How does **Eco-Boost™** technology work?





Maximum BTU*	77,000
Typical sq.ft heated*	up to 2,600 sq. ft.
Optimum Efficiency	86.1%
Max. log size	22 in.
Burn Time (Typical)*	up to 14 hrs
Emissions (grams/hour)	1.8
Firebox size	2.6 cu. ft.
Flue size	6"
Viewing area	250 sq. in.
Load opening	20 in. W x 10 in. H
Temperature activated blower (optional)	125 CFM
Firebox construction	Heavy gauge premium steel
Technology	Eco-Boost™ combustion technology

\* Length of burn time and BTU range depend on type of wood, moisture content, climate conditions and installation.

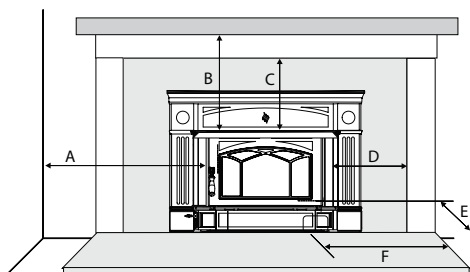
	Width	Height	Depth
Minimum Fireplace Opening	28-13/16"	21-3/4"	19"
Faceplates			
Standard	41-3/8"	26-1/2"	3-3/4"
Oversized	44"	31"	3-3/4"
Optional Backing Plates			
Standard	44"	29-7/8"	
Oversize	48"	33-7/8"	

## Minimum Clearances to Combustible Materials

The minimum required clearances to combustible materials when installed into a masonry or factory built fireplace are listed below.

Minimum Clearances to Combustible Materials	Adjacent Side Wall (to Side of Door)	Mantel** (to Top of Door)	Top Facing (to Top of Door)	Side Facing (to Side of Door)	Minimum Hearth Extension*	Minimum Hearth Side Extension*
	A	B	C	D	E	F
HI400	12-3/16"	21-5/8"	14"	7-3/8"	US 16" Canada 18"	8"

Measurements A,B,C,D are from Top/Side of Door



**Minimum Hearth Extension for the front (E) and sides (F) are measured from the fuel door opening.**

Side and Top facing is a maximum of 1.5" thick.

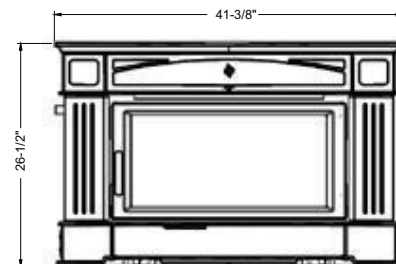
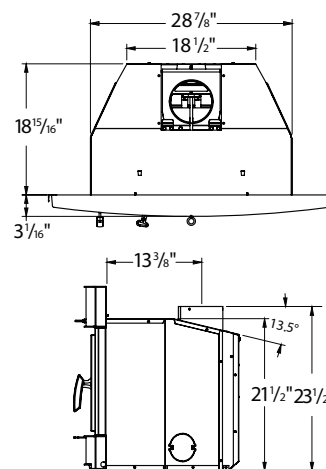
\* Side hearth extension for Canada measured from side of appliance.

\*\* Hearth to have minimum: R value of 2.13 or greater.

\*\* A non-combustible mantel may be installed at a lower height if the framing is made of metal studs covered with a non-combustible board.

\*\* Max. mantle depth is 10" (254mm)

## Dimensions

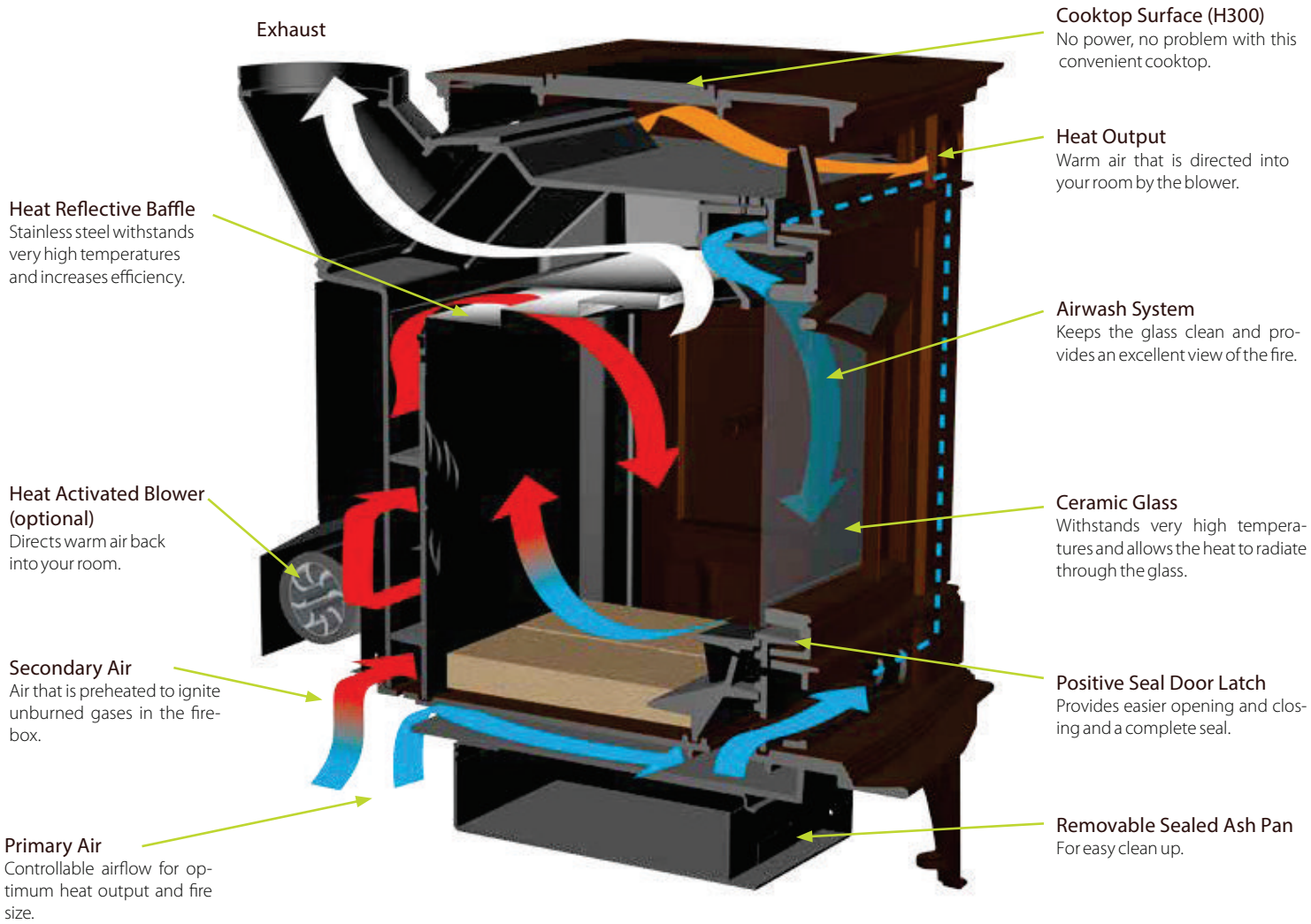




# Hampton® Wood Products

## Non-catalytic Technology

Hampton wood stoves use non-catalytic technology. This means that the airflow in the firebox is directed to reburn smoke, creating greater efficiency, a spectacular fire and cleaner emissions.



## burning wood - a green choice

### Renewable Resource

Wood is a renewable natural resource. Well-managed forests are a renewable, sustainable source of energy that helps us reduce greenhouse gas emissions and be less dependent on oil & gas.

Burning firewood produces the same amount of carbon dioxide as the tree has absorbed during its life cycle - making wood burning carbon neutral.

### Wood is Carbon Neutral

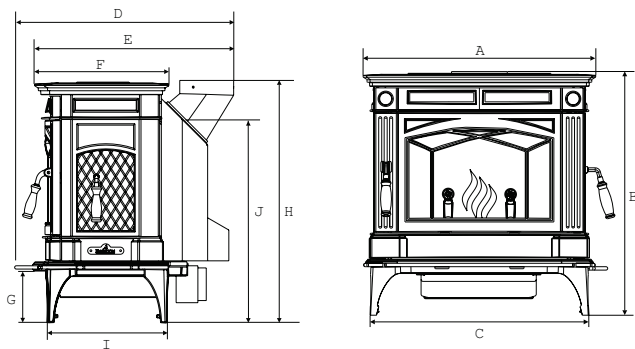
As trees grow they absorb carbon dioxide from the atmosphere. When trees die and are left to decompose in the forest or burn in forest fires the carbon stored in the trees is released in the atmosphere as carbon dioxide.

All Hampton Wood Stoves and Fireplace Inserts have been tested and certified to the strictest clean air standards as set by the Environmental Protection Agency.





## wood stoves

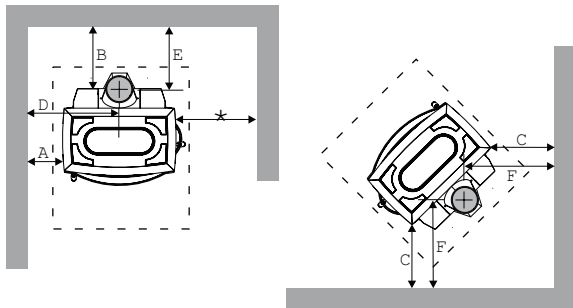


Dimensions	H200	H300
A	23-7/8"	27"
B	27-5/8"	29-3/4"
B (short legs)	22-5/8"	24-3/8"
C	22-1/8"	25-1/2"
D	25-1/8"	26"
E	21"	24"
F	16"	16-1/8"
G	7-1/8"	7-1/8"
H	28-3/4"	30-1/4"
H (short legs)	23-3/4"	24-3/4"
I	15"	15"
J*	25-7/8"	27-1/4"
J* (short legs)	21"	22-1/8"

\* to center line if rear vented.

Specifications	H200	H300
Maximum BTU*	38,800	45,500
Typical Sq. Ft. Heated	1,500	2,000
Optimum Efficiency	83.9%	83.6%
Maximum Log Size	16"	18"
Burn time (typical)*	up to 6 hrs	up to 8 hrs.
Emissions (grams/hr)	3.9	4.2
Firebox Size	1.34 cu. ft.	1.71 cu. ft.
Flue size	6"	6"
Shipping Weight	417 lb	474 lb

\* Length of burn time and BTU range depend on type of wood, climate conditions and installation.

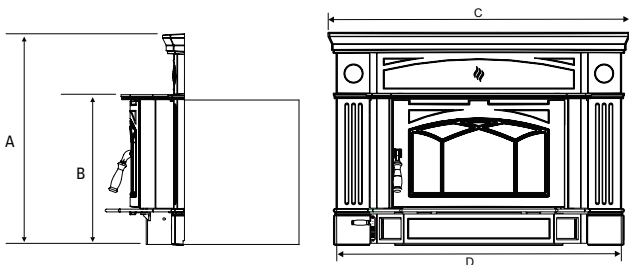


Minimum Clearance To Combustibles		A	B	C	D	E	F
H200	Residential Installation "C" Vent	17"	15"	13"	29"	17-1/8"	19-7/8"
	Residential Close Clearance	15"	10"	9"	27"	12-1/8"	15-7/8"
	Mobile Home Close Clearance	15"	10"	9"	27"	12-1/8"	15-7/8"
H300	Residential Installation "C" Vent	17"	15"	13"	30"	15"	19"
	Residential Close Clearance	15"	10"	9"	28"	10"	15"
	Mobile Home Close Clearance	15"	10"	9"	28"	10"	15"

Note: In Canada floor protection must extend 18" to the front and 8" to the sides and back. With side load door floor protection must extend 18" to the side. In US same as above except floor protection extends 6" to sides and back.

\*Minimum clearance with side load door is 18" to side wall. Refer to dimension (B) for clearance without side load door.

## wood inserts



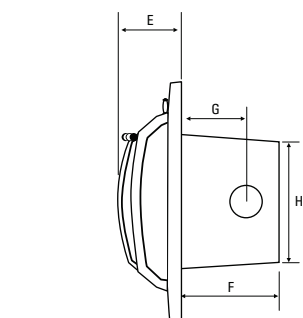
Dimensions	HI200	HI300	HI300 oversized
A	27-1/4"	30"	34-9/16"
B	--	21-1/2"	21-1/2"
C	39-13/16"	42-1/2"	51-15/16"
D	38-5/16"	40"	48-1/8"
E	6-3/8"	11-3/8"	12-1/2"
F	15-1/16"	17-1/4"	16-3/16"
G	9-5/8"	11-1/8"	11-1/8"
G (offset adaptor)	14-1/8"	--	--
H	21-1/4"	23-1/4"	23-1/4"

Specifications	HI200	HI300
Maximum BTU*	55,000	75,000
Typical Sq. Ft. Heated	600-1,000	1,000-2,000
Optimum Efficiency	77.7%	77.0%
Maximum Log Size	18"	18"
Burn time (Typical)*	up to 8 hrs.	up to 8 hrs.
Emissions (grams/hour)	3.0	3.44
Firebox Size	1.4 cu.ft.	2.3 cu.ft.
Flue size	6"	6"
Shipping Weight	258 lb.	437 lb.

\* Note: If the hearth extension is flush with the floor (item F) it must extend 19.5 in. in front of the body face (item E).

\*\* Note: Hearth extension width (G) is measured from edge of fuel door to side of hearth.

\*\*\* up to 1-1/2" thick



Minimum Fireplace Opening	HI200	HI300
Width (front)	25"	25"
Height	19-5/8"	21-1/2"
Depth (w/ standard flue adaptor) (w/ offset flue adaptor)	15-1/16"	17-1/2"

### Masonry & Factory Built Fireplace Clearances

The minimum required clearances to combustible materials when installed into a masonry fireplace are:

	Adjacent Side Wall (to side)	Mantel (to top)	Top Facing (to top)***	Side Facing (to side)***	Min. Hearth Extension*	Min. Hearth Thickness*	Min Hearth Side Extension**
	A	B	C	D	E	F	G
HI200	15"	20"	14"	7-3/8"	18"CA/16"US	1-1/2"	8" CA/6" US
HI300 (regular faceplate)	11"	20"	12"	8"	18"CA/16"US	1/2"	8"
HI300 (oversize faceplate)	11"	20"	14"	11"	18"CA/16"US	1/2"	8"

\* Note: If the hearth extension is flush with the floor (item F) it must extend 19.5 in. in front of the body face (item E).

\*\* Note: Hearth extension width (G) is measured from edge of fuel door to side of hearth.

\*\*\* up to 1-1/2" thick

